

Multifunction Color

# RICOH MP C6502/MP C8002

**RICOH**  
imagine. change.

Copier  Printer  Facsimile  Scanner



**MP C6502**

**65**  
ppm  
monochrome  
and full-color

**MP C8002**

**80**  
ppm  
monochrome  
and full-color

# Handle everything with superior, high-quality color

The combination of speed and quality has never offered clearer advantages. The RICOH® MP C6502/MP C8002 color digital MFP uses cutting-edge laser technology to produce fast, exceptional color output in high-volume offices and graphics departments. This innovative MFP offers intuitive end-to-end control to improve workflow for everyday tasks. Take advantage of outstanding image quality, enhanced paper handling and robust finishing by keeping more jobs in house. Transform your MFP into an information portal by connecting to the cloud from your smartphone, tablet or other mobile device and use these systems to print, share and discover the value of customized convenience. Use it as your standalone, primary system — or as an integral part of a Ricoh Managed Document Services (MDS) strategy and improve productivity throughout your organization.

- Print full-color or black-and-white documents at speeds of 65 or 80 ppm
- Deliver impressive color with image resolution up to 1200 x 4800 dpi
- Produce documents in sizes up to 13" x 19.2"
- Advanced scanning capabilities
- Paper capacity up to 8,100 sheets
- Comprehensive inline finishing options





## Transform everyday into the extraordinary

Enhance performance with high-impact, high-volume features

### See unprecedented image quality

Bring production print quality to any office. Achieve the highest resolution available — up to 1200 x 4800 dpi — from the first print to the last with the Ricoh MP C6502/MP C8002. New and innovative technology called Vertical Cavity Surface Emitting Laser (VCSEL) helps deliver precise registration and fill on text and images for superior clarity. The system emits 40 laser beams simultaneously to ensure accurate color density for impressive output every time. It also adjusts the paper automatically so graphics match more closely on the front and back of every sheet.



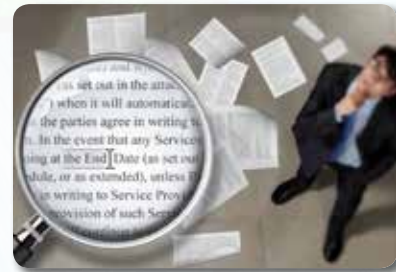
### Be more productive

Productivity comes standard with the Ricoh MP C6502/MP C8002. It produces up to 80 prints per minute for fast, high-volume color output. Take advantage of its quick one-pass duplex scanning that scans both sides of any original in a single pass. Reload paper and replace toner without interrupting print runs for continuous uptime and maximum productivity. Use the embedded Web Browser option and connect to the Ricoh Integrated Cloud Environment (ICE) to scan documents, send files to popular Web services, print on the go and more with the touch of a button — without on-premise software solutions.



### Integrate processes to streamline workflow

Combine advanced printing, copying, faxing and scanning capabilities in a single system designed to reduce space, unnecessary steps and operating costs. The Ricoh MP C6502/MP C8002 includes Distributed Scan Management (DSM) for centralized scanning control that automates document tasks for faster, more efficient workflow while following specific user permissions, rules, delivery preferences and more. Use the new embedded Optical Character Recognition (OCR) scanning to create searchable PDF files for advanced indexing and retrieval of scanned documents. Send large, full-color files easily as high-compression PDFs. ID card copy lets users replicate both sides of documents, forms and ID cards onto one side of paper.



### Complete everyday projects with ease

A large, full-color touch-screen control panel lets users set up shortcuts for convenient, one-step access to specific jobs and functions. Bring projects with you via a convenient USB memory or SD card slot on the control panel. Featuring a range of technologies to minimize paper misfeeds, these models deliver stable operation even when printing at high speed. Advanced, real-time animated graphics and other features also ensure that when a misfeed does occur, troubleshooting is quick, easy and stress free.





# Designed to showcase the best ideas

## Add color to add impact

New P<sub>x</sub>P<sup>®</sup>-EQ formulated toner expands the color space for advanced color management. Because the toner melts at lower temperatures, it requires less energy and minimizes operating costs — making it ideal for in-house graphics departments that are conscious of both quality and budget. The Ricoh MP C6502/MP C8002 provides consistently stable color recognition that significantly minimizes banding, gaps and shock jitter. Advanced print drivers offer incredible flexibility, so users can adjust colors, brightness, saturation and more to meet any color demand. Plus, users can take advantage of the powerful, user-friendly Fiercy<sup>®</sup> E-22B Print Controller for more complex color workflows in either Windows or Mac environments for effortless, high-grade print and color control.



## Manage multiple media

Produce more jobs in-house — including direct mail, proposals, booklets, manuals and more — with a wide range of paper handling features. The high-capacity Ricoh MP C6502/MP C8002 can hold up to 8,100 sheets to ensure even the largest workgroups keep moving efficiently. It accepts thicker paper stocks for duplex printing in weights up to 142 lb. Index (256 g/m<sup>2</sup>). It can accept up to 110 lb. Cover (300 g/m<sup>2</sup>) for non-duplex printing via the RT4030 large capacity tray or via the bypass tray. The system can run and finish up to 13" x 18" sized paper with full bleed up to 11" x 17" for posters and signage.



## Finish what you start

Use the Ricoh MP C6502/MP C8002 to create a wide range of impressive, professional-grade documents on demand and eliminate expensive outsourcing. Craft highly compelling pieces with multiple folding options using the FD4000 Multi-Folding Unit. Take advantage of stapling, hole-punching, saddle stitching and more to meet unique requirements and quick turnarounds. Newly designed, flat fold booklet finishing ensures that booklets are neat, thin and significantly easier to handle.



# End-to-end control for larger workgroups

## Sustain energy efficiency for your environment

The Ricoh MP C6502/MP C8002 lets users perform more tasks while reducing Typical Electricity Consumption (TEC). The system can be programmed to power on and off with a Weekly Timer to fit the way you want to work — and save. Default duplex printing reduces paper and operating costs without compromising quality.



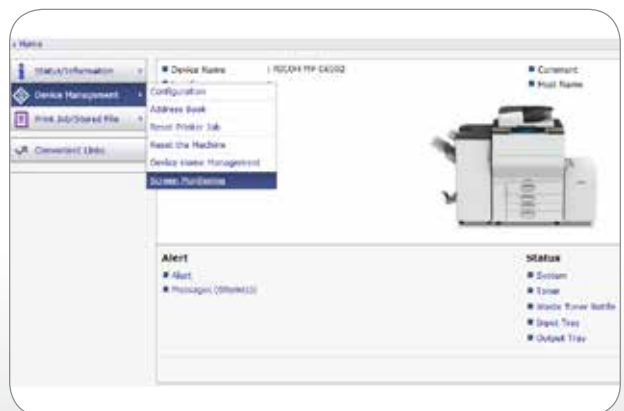
## Protect document integrity

The Ricoh MP C6502/MP C8002 has enhanced features that help organizations meet today's growing security needs. The device includes user authentication to restrict access to critical MFP functions to only those with a valid user name and password. Likewise, stored documents are released only to authorized users. Administrators can set quotas for individual users or workgroups to curb excessive color printing and to restrict access to specific functions. In addition, the DataOverwriteSecurity System (DOSS) feature destroys latent images and data on the HDD.



## Manage performance easily, remotely

The new Remote User Interface supports panel monitoring, which helps speed problem resolution and maximizes IT personnel productivity. Administrators can also monitor usage of the Ricoh MP C6502/MP C8002 — or an entire fleet — with the built-in Embedded @Remote device management functionality, or it can be managed by one of the other @Remote fleet solutions. Administrators can monitor usage trends, collect and report meter data and generate an array of usage reports, including @Remote Green Reports, to ensure eco-friendly initiatives are meeting targets.

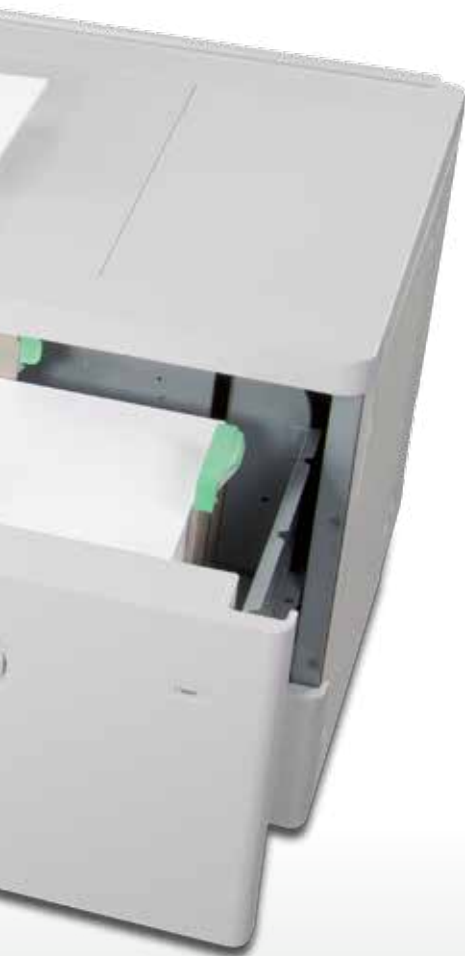




# Innovative features for fast, flexible and affordable workflow



Ricoh MP C6502/MP C8002



- 1 CI4010 and CI4020 Cover Interposers (Optional):** Feed pre-printed sheets from one or two sources for front and back covers.
- 2 CS4010 9-Bin Mailbox (Optional):** Keep documents from multiple users separate with the 9-Bin Mailbox.
- 3 SR4100 2,000-Sheet Booklet Finisher (Optional):** Produce full-color booklets cost-effectively with the in-line Booklet Finisher. Also available with an optional Hole Punch Unit.
- 4 SR4090 and SR4110 (shown) 3,000-Sheet Finishers (Optional):** Choose from 65- or 100-sheet stapling with the ability to output documents up to 13" x 19.2". Add the optional Hole Punch Unit for even more flexibility.
- 5 FD4000 Multi-Folding Unit (Optional):** Execute several different folds to create a variety of finished documents.
- 6 BK5010e Production Booklet Maker (Optional):** Saddle stitch up to 30 sheets to create 120-page booklets.
- 7 GBC StreamPunch™ (Optional):** Create professional-quality bound books with in-line punching in a variety of patterns.
- 8 220-Sheet Single Pass Duplex Feeder (Standard):** Offers single-pass color duplex scanning at 220 spm.
- 9 Full-Color WVGA Control Panel with SD/USB Slot (Standard):** Navigate from job to job easily with fingertip control via the intuitive touch screen featuring a user-friendly slot for SD/USB cards.
- 10 Power On/Off Timer (Standard):** Saves energy and minimizes waiting by automatically turning the MFP on or off at pre-determined times.
- 11 Automatic Duplexing (Standard):** Save paper and filing space with standard automatic duplexing that runs at the same speed as one-sided output.
- 12 VCSEL and PxP-EQ Toner Technology (Standard):** Vertical Cavity Surface Emitting Laser and high-quality toner provide more vivid colors and smooth gradations for improved text, fine lines, graphics and photographic reproductions.
- 13 640GB Hard Disk Drive (Standard):** Secure documents with DataOverwriteSecurity System (DOSS), Data Encryption, Locked Print and more (capacity for Locked Print is 170GB).
- 14 Oversize and Heavy Media Support:** Accepts 13" x 19.2" paper sizes and heavy media (up to 110 lb. Cover stock through the Bypass Tray and the RT4030 LCT) to give you many more options for in-house production.
- 15 Paper Trays (Standard):** Standard paper sources include the tandem 2 x 1,250-sheet Paper Tray, two 550-sheet Paper Trays and 100-sheet Bypass Tray for a total paper capacity of 3,700 sheets. With additional paper sources, this system can hold up to 8,100 sheets.
- 16 RT4030 (shown) and RT4020 Large Capacity Trays (Optional):** The RT4030 2,200-sheet LCT utilizes the system Bypass Tray for a straight paper path to help reliably feed up to 110 lb. Cover stock (300 g/m<sup>2</sup>) and up to 13" x 19.2" sheets. Choose the RT4020 4,400-sheet LCT to handle paper sizes up to 8.5" x 11" and up to 80 lb. Cover stock (216 g/m<sup>2</sup>).
- 17 Broad Compatibility:** Quickly integrate these systems with built-in compatibility for PC and Mac environments in LAN or wireless networks.

# Ricoh MP C6502/MP C8002

## SYSTEM SPECIFICATIONS

### Specifications

<b>Output Speed (LTR)</b>	MP C6502: 65 ppm (FC/B&W) MP C8002: 80 ppm (FC/B&W)
<b>Document Feeder</b>	Standard 220-Sheet SPDF with single-pass color duplex scanning
<b>Control Panel</b>	Full-color 9" WVGA touch panel
<b>Copy Resolution</b>	600 dpi
<b>Color/Grayscale</b>	256 Levels
<b>Quantity Indicator</b>	1 - 9,999
<b>Original Size</b>	Up to 11" x 17" (279.4 x 431.8 mm) (from platen)
<b>Warm-Up Time</b>	50 sec. (from main switch)
<b>Recovery Time</b>	MP C6502: 50 sec. (from sleep mode) MP C8002: 45 sec. (from sleep mode)
<b>First Copy Speed</b>	MP C6502: 5.3/7.2 sec. (B&W/FC) MP C8002: 4.6/6.2 sec. (B&W/FC)
<b>Paper Capacity</b>	Tray 1: 1,250 sheets x 2 Trays 2 - 3: 550 sheets x 2 Bypass Tray: 100 sheets
<b>Total Paper Capacity</b>	3,700 (std.)/8,100 sheets (max.)
<b>Paper Size</b>	Tray 1: 8.5" x 11" Trays 2 - 3: 5.5" x 8.5" to 13" x 19.2" Bypass Tray: 5.5" x 8.5" to 13" x 19.2" Tray 1/2/3: 14 lb. Bond - 142 lb. Index (52 - 256 g/m <sup>2</sup> )
<b>Paper Weight</b>	Bypass Tray: 14 lb. Bond - 110 lb. Cover (52 - 300 g/m <sup>2</sup> ) Duplex: 14 lb. Bond - 142 lb. Index (52 - 256 g/m <sup>2</sup> )
<b>Magnification</b>	7 reduction and 5 enlargement
<b>Zoom</b>	25% to 400% in 1% increments
<b>Power Requirements</b>	MP C6502: 120V/20A/60Hz (dedicated) MP C8002: 208-240V/20A/60Hz (dedicated)
<b>Typical Electricity Consumption (TEC)</b>	MP C6502: 5.08 kWh/week MP C8002: 6.37 kWh/week
<b>Max. Power Consumption</b>	MP C6502: 1,920W or less MP C8002: 2,400W or less
<b>Dimensions (WxDxH)</b>	29.5" x 34.9" x 48.3" (750 x 886 x 1,226 mm) (incl. SPDF)
<b>Weight</b>	Less than 531 lbs. (241 kg)

### Copier Features

Eco-Friendly Indicator, Power On/Off Timer, Auto Off Timer, Simplified Display, Auto Paper Selection, Auto Start, Auto Tray Switching, Auto Image Density, Auto Color Calibration, Color Erase/Convert/Overlay, Image Rotation, Rotate Sorting, Interrupt Copy, Job Presets, Tabs, Color/Image Creation, Color Balance Adjustment/Program, Shift/Erase/Margin Adjustment, Multiple Security Features (DOSS, Data Encryption (AES256bit/SHA2), Authentication, Unauthorized Copy Control, Quota Setting, SMTP over SSL, Common Criteria Certification (IEEE2600.1), Import/Export of Preference Settings, Remote User Interface

### Printer Specifications (Standard)

<b>CPU</b>	Intel® Celeron® Processor P4505 - 1.86 GHz
<b>RAM</b>	2.5 GB
<b>HDD</b>	640GB (320GB x 2) (Shared)
<b>Max. Print Resolution</b>	1200 x 4800 dpi via VCSEL
<b>Standard Interfaces</b>	Ethernet (10/100/1000Base-TX), USB2.0 Type A/Type B, SD slot
<b>Optional Interfaces</b>	IEEE 1284/ECP, Wireless LAN (IEEE802.11a/b/g/n)
<b>Network Protocol</b>	TCP/IP (IPv4, IPv6), IPX/SPX (w/option)
<b>Network Operating Systems</b>	Windows XP/Vista/7/Server 2003/Server 2003R2/Server 2008/Server 2008R2; Netware 6.5; Unix Sun Solaris, HP-UX, SCO OpenServer, RedHat Linux, IBM AIX, MAC OS X 10.2 or later; SAP R/3; NPDS Gateway; IBM iSeries AS/400 using OS/400 Host Print Transform
<b>Print Drivers</b>	PCL5c, PCL6, PDF, Adobe PS3 (optional), XPS, IPDS (optional)
<b>Fonts</b>	PCL: 45 scalable + 13 international; PDF: 136 Roman; IPDS: 108 Roman (optional)
<b>Printer Features</b>	Sample/Locked/Hold/Scheduled/Store Print, PDF Direct Print, CLP Simulation, Mail to Print, Bonjour (Rendezvous) Support, Media Direct Print (Print from USB/SD), Mobile Driver, Poster Print, Auto Job Promotion, WS Print, WPS (Wi-Fi Protected Setup), XPS

### Scanner Specifications (Standard)

<b>Scanning Resolution</b>	Up to 600 dpi
<b>Scan Area</b>	Up to 11.7" x 17" (297 x 432 mm)
<b>Scan Speed (B&amp;W/FC)</b>	Simplex: 120 ipm; Duplex: 220 ipm
<b>Output Format</b>	Single Page: TIFF/JPEG/PDF/High Compression PDF/PDF-A Multi Page: TIFF/PDF/High Compression PDF/PDF-A
<b>Compression</b>	B&W - 1bit (MH/MR/MMR/JBIG2), Grayscale (JPEG), Full Color - JPEG (10/100/1000Base-TX, Wireless LAN (IEEE802.11 a/b/g/n), USB2.0 Type A, SD card slot)
<b>Interface Support</b>	SMTP/POP before SMTP B&W/FC Photo, B&W/FC Text, ACS, Auto Density, Image Rotation, Mixed Size/SADF/Batch Mode, Reduce and Enlarge, Split Scan, Scan-to Email/SMB/FTP/URL/NC/F/PDF/A/Digitally Signed PDF/ Searchable PDF, TWAIN Scanning, USB/SD2.0 Scanning, LDAP Support, Universal Send, Distributed Scan Management, Preview Before Transmission, WS-Scanner
<b>Authentication</b>	SMTP/POP before SMTP
<b>Scanner Features:</b>	B&W/FC Photo, B&W/FC Text, ACS, Auto Density, Image Rotation, Mixed Size/SADF/Batch Mode, Reduce and Enlarge, Split Scan, Scan-to Email/SMB/FTP/URL/NC/F/PDF/A/Digitally Signed PDF/ Searchable PDF, TWAIN Scanning, USB/SD2.0 Scanning, LDAP Support, Universal Send, Distributed Scan Management, Preview Before Transmission, WS-Scanner

### Document Server Specifications (Standard)

<b>Max. Stored Documents</b>	3,000
<b>Max. Pages per Document</b>	3,000
<b>Max. Stored Pages</b>	15,000
<b>Folder Management</b>	Yes (password protectable)

### Fax Specifications (Optional)

<b>Circuit</b>	PSTN, PBX
<b>Compatibility</b>	ITU-T (CCITT) G3, Additional G3 opt.
<b>Resolution</b>	200 x 100/200 dpi (400 dpi w/opt. SAF memory)
<b>Compression Method</b>	MH, MR, MMR, JBIG
<b>Modem Speed</b>	33.6 K - 2,400 bps
<b>Transmission Speed</b>	G3: Approx. 2 sec.
<b>Memory Backup</b>	1 hour
<b>Quick/Speed Dials</b>	2,000 numbers
<b>Group Dials</b>	100 groups (500 per group)
<b>SAF Memory Capacity</b>	Standard: 4MB (approx. 320 pages), Maximum: 28MB (approx. 2,240 pages with memory option)
<b>Fax Features</b>	Detection of Misplaced Document, Direct SMTP, Internet Fax (T.37), LAN Fax, IP Fax (T.38), Remote Fax (option), Forward to Email/Folder, Paperless Fax, LDAP Support

### Accessories

<b>RT4030 DLT Large Capacity Tray (LCT)</b>	Paper Capacity: 2,200 sheets Paper Size: Up to 13" x 19.2" Paper Weight: 14 lb. - 110 lb. Cover (52 - 300 g/m <sup>2</sup> ) Size: 34.2" x 28.7" x 25.9" (869 x 730 x 658 mm) Weight: 180 lbs. (82 kg)
<b>RT4020 Large Capacity Tray (LCT)</b>	Paper Capacity: 4,400 sheets Paper Size: 8.5" x 11" Paper Weight: 14 lb. - 80 lb. Cover (52 - 216 g/m <sup>2</sup> ) Size: 19.7" x 21.3" x 24.6" (500 x 540 x 625 mm) (with LG unit) Weight: 44 lbs. (20 kg)
<b>CI4010 Single Source Cover Interposer</b>	Paper Size: 5.5" x 8.5" - 11" x 17" Paper Weight: 17 lb. Bond - 80 lb. Cover (64 - 216 g/m <sup>2</sup> ) Stack Capacity: 200 sheets x 1 tray
<b>CI4020 Dual Source Cover Interposer</b>	Paper Size: 5.5" x 8.5" - 13" x 19" Paper Weight: 17 lb. Bond - 80 lb. Cover (64 - 216 g/m <sup>2</sup> ) Stack Capacity: 200 sheets x 2 trays
<b>SR4090 3,000-Sheet Finisher with 65-Sheet Stapler</b>	Capacity (Proof Tray): 250 sheets (8.5" x 11" or smaller) 50 sheets (8.5" x 14" or larger) Capacity (Shift Tray): 50 sheets (8.5" x 11" - 3,000 sheets) 8.5" x 14" - 13" x 19.2" - 1,500 sheets 5.5" x 8.5" - 13" x 19.2" Paper Size: Proof Tray: 14 lb. Bond - 80 lb. Cover (52 - 220 g/m <sup>2</sup> ) Shift Tray: 14 lb. Bond - 110 lb. Cover (52 - 300 g/m <sup>2</sup> ) Staple Size: 8.5" x 11" - 11" x 17" - 65 pages 25.8" x 24.1" x 37.8" (657 x 613 x 960 mm) Weight: 117 lbs. (53 kg)
<b>SR4110 3,000-Sheet Finisher with 100-Sheet Stapler</b>	Capacity (Proof Tray): 500 sheets (8.5" x 11" or smaller) 250 sheets (8.5" x 14" or larger) Capacity (Shift Tray): 8.5" x 11" - 3,000 sheets (LEF) 8.5" x 11" - 11" x 17" - 1,500 sheets (LEF) 12" x 18" - 13" x 19" - 1,000 sheets (SEF)

<b>Paper Size</b>	5.5" x 8.5" - 13" x 19"
<b>Paper Weight</b>	Proof Tray: 14 lb. Bond - 80 lb. Cover (52 - 216 g/m <sup>2</sup> ) Shift Tray: 14 lb. Bond - 110 lb. Cover (52 - 300 g/m <sup>2</sup> ) 8.5" x 11" - 11" x 17" - 50 pages 31.7" x 28.7" x 38.5" (806 x 730 x 980 mm) 165 lbs. (75 kg)
<b>Staple</b>	8.5" x 11" - 100 pages 8.5" x 14" - 11" x 17" - 50 pages
<b>Size</b>	31.7" x 28.7" x 38.5" (806 x 730 x 980 mm)
<b>Weight</b>	165 lbs. (75 kg)
<b>SR4100 2,000-Sheet Booklet Finisher</b>	Capacity (Proof Tray): 250 sheets (8.5" x 11" or smaller) 50 sheets (8.5" x 14" or larger) Capacity (Shift Tray): 8.5" x 11" - 2,000 sheets (LEF) 8.5" x 11" - 13" x 19.2" - 1,000 sheets (SEF)
<b>Paper Size</b>	5.5" x 8.5" - 13" x 19.2"
<b>Paper Weight</b>	14 lb. Bond - 80 lb. Cover (52 - 220 g/m <sup>2</sup> )
<b>Staple</b>	8.5" x 11" - 11" x 17" - 65 pages
<b>Saddle Stitch Staple</b>	8.5" x 11" - 13" x 18" - 20 pages
<b>Size</b>	25.8" x 24.1" x 37.8" (657 x 613 x 960 mm)
<b>Weight</b>	117 lbs. (53 kg)
<b>FD4000 Multi-Folding Unit</b>	Folding Type: <i>Single Sheet Mode:</i> Z-Fold, Half-Fold, Letter Fold-in, Letter Fold-out, Double Parallel, Gate-Fold <i>Multiple Sheet Mode:</i> same as Single Sheet mode; up to 3 sheets. <i>Single Sheet Mode:</i> Z folding: 8.5" x 11" - 12" x 18"; Half folding: 8.5" x 11" - 13" x 19.2"; Letter folding: 8.5" x 11" - 12" x 18"; Double Parallel/ Gate folding: 8.5" x 11" - 12" x 18" <i>Multiple Sheet Mode:</i> Half folding: 8.5" x 11" - 13" x 19.2"; Letter Fold-out: 8.5" x 11" - 8.5" x 14"; Letter Fold-in: 8.5" x 11" - 12" x 18"; 18.5" x 38.5" x 28.75" (470 x 980 x 730 mm) 203 lbs. (92 kg)
<b>Size</b>	8.5" x 11" (LEF)
<b>Weight</b>	210 lb. Bond - 110 lb. Index (216 g/m <sup>2</sup> )
<b>GBC StreamPunch™</b>	Paper Size Punched: 8.5" x 11" (LEF) Paper Weight: 210 lb. Bond - 110 lb. Index (216 g/m <sup>2</sup> ) Die Sets: CombBind®, Twin Loop Wire (2:1 or 3:1), ColorCoil®, VeloBind®, Three-Ring, ProClick®
<b>BS5010e Production Booklet Maker</b>	Paper Size: 8.5" x 11" - 11" x 17" Paper Weight: 16 lb. Bond - 110 lb. Index (216 g/m <sup>2</sup> )

### Additional Accessories

PU5000 Punch Unit; PU3060 Punch Unit; 11" x 17" Tray Unit Type M2; Copy Data Security Kit Type G; Adobe PostScript3 Unit Type M2; IEEE802.11a/g/n Type M2; IEEE1284 I/F Board Type A; G3 Interface Kit Type M2; Copy Tray Type M2; FAX Memory Unit Type B 32MB; OCR Unit Type M2; IPDS Unit Type M2; SD Card for Netware Printing Type M2; Fax Option Type M2; Fax Connection Unit Type M2; Smart Card Reader Type M2, DataOverwriteSecurity System Unit (DOSS) Type H (ISO15408 certified), CS4010 9-Bin Mailbox Unit, Web Browser (option) for Ricoh Integrated Cloud Environment (ICE) integration (option), Device Manager NX integration (option)

### Fiery E-22B Color Controller Specifications

<b>Controller Type</b>	Embedded Type
<b>Fiery Platform</b>	FS100
<b>Maximum Continuous Print Speed</b>	MP C6502: 65 ppm B/W and Color MP C8002: 80 ppm B/W and Color
<b>CPU</b>	Intel Processor G850 2.9GHz
<b>Host Interface</b>	1000Base-T/100Base-TX/10Base-T
<b>Memory</b>	2 GB
<b>Internal HDD</b>	500 GB
<b>Operating System</b>	Linux
<b>Network Protocol</b>	TCP/IP (IPv4/IPv6), SMB, Bonjour
<b>Printer Description</b>	Adobe PostScript 3 (std.), PCL6/5c (std.)
<b>Language</b>	
<b>Max Print Resolution</b>	Up to 1200 dpi (2 bit)
<b>Max Scan Resolution</b>	Up to 600 dpi
<b>Fonts</b>	PS3: 138 fonts/PCL: 81 AGFA fonts
<b>Operation Panel</b>	Via touch panel display on the MFP
<b>Utilities</b>	Standard: Command WorkStation 5, Fiery Scan, Printer Delete Utility, Fiery Web Tools, Fiery Bridge, Fiery VUE, Secure Erase Optional: Fiery Impose, Fiery Compose, Color Profiler Suite ES-2000, Auto Trapping, Spot-On, Hot Folders/Virtual Printers, Productivity Package
<b>Color Management Tools</b>	ICC Profile, Color Chart, CMYK Color Reference Pages, RGB Color Tests, Trapping Support
<b>Calibration</b>	Color Cal, ES-2000 (opt.)

For maximum performance and yield, we recommend using genuine Ricoh parts and supplies.

**RICOH**  
imagine. change.

www.ricoh-usa.com

Ricoh Americas Corporation, 70 Valley Stream Parkway, Malvern, PA 19355, 1-800-63-RICOH  
RICOH and the Ricoh Logo are registered trademarks of Ricoh Company, Ltd. All other trademarks are the property of their respective owners. ©2013 Ricoh Americas Corporation. All rights reserved. The content of this document, and the appearance, features and specifications of Ricoh products and services are subject to change from time to time without notice. Products are shown with optional features. While care has been taken to ensure the accuracy of this information, Ricoh makes no representation or warranties about the accuracy, completeness or adequacy of the information contained herein, and shall not be liable for any errors or omissions in these materials. Actual results will vary depending upon use of the products and services, and the conditions and factors affecting performance. The only warranties for Ricoh products and services are as set forth in the express warranty statements accompanying them.

